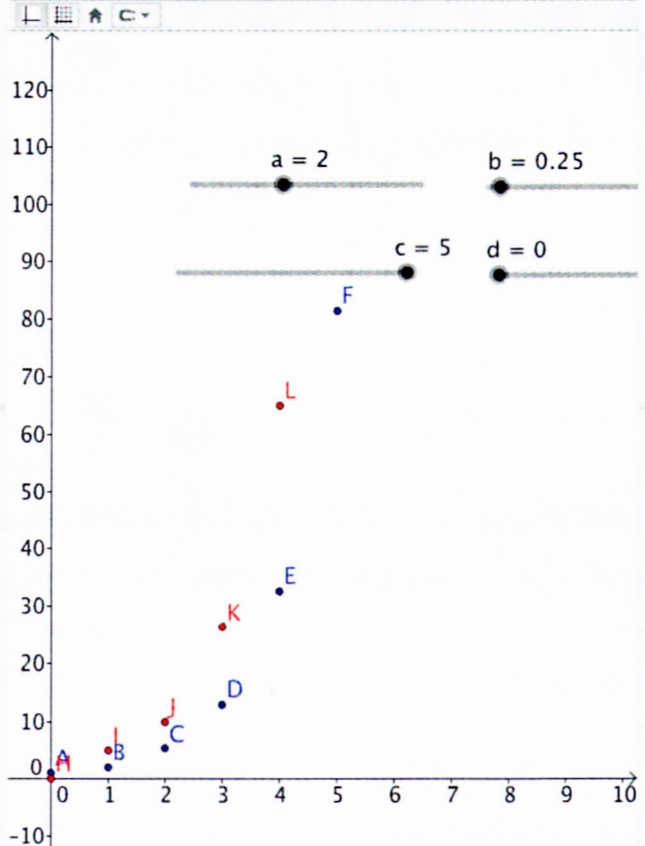
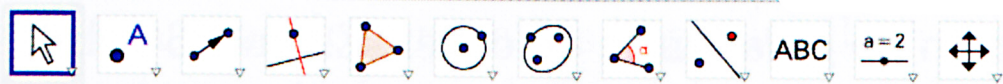


- Getal
 - a = 2
 - b = 0.25
 - c = 5
 - d = 0
- Lijst
 - lijst1 = {(0, 1), (
 - lijst2 = {(0, 0), (
- Punt
 - A = (0, 1)
 - B = (1, 2)
 - C = (2, 5.25)
 - D = (3, 13)
 - E = (4, 32.56)
 - F = (5, 81.38)
 - G = (6, 203.45)
 - H = (0, 0)
 - I = (1, 5)
 - J = (2, 10)
 - K = (3, 26.25)
 - L = (4, 65)
 - M = (5, 162.81)
 - N = (6, 406.88)



	A	B	C	D	E	F
1	k	U_k	k	V_k	$(U_1 + V_1)/(U_0 + V_0)$	U_k/V_k
2	0	1	0	0		
3	1	2	1	5	7	0.4
4	2	5.25	2	10	2.18	0.53
5	3	13	3	26.25	2.57	0.5
6	4	32.56	4	65	2.49	0.5
7	5	81.38	5	162.81	2.5	0.5
8	6	203.45	6	406.88	2.5	0.5
9	7	508.63	7	1017.27	2.5	0.5
10	8	1271.57	8	2543.13	2.5	0.5
11	9	3178.91	9	6357.83	2.5	0.5
12	10	7947.29	10	15894.57	2.5	0.5
13	11	19868.21	11	39736.43	2.5	0.5
14	12	49670.54	12	99341.07	2.5	0.5
15	13	124176.34	13	248352.69	2.5	0.5
16	14	310440.86	14	620881.72	2.5	0.5
17	15	776102.15	15	1552204.29	2.5	0.5
18						
19						
20						
21						



Algebravenster

Tekenvenster

Rekenblad

Punt

● A = (0, 0)

● B = (0.8, 0.72)

Tekst

○ A1 = "M a t"

○ B1 = "r i x A"

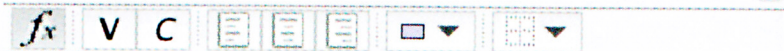
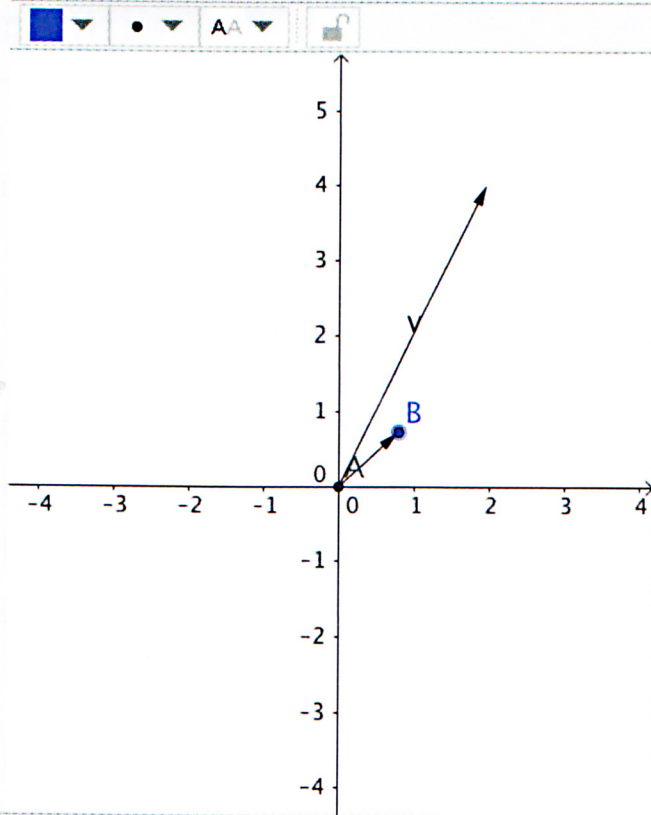
○ C1 = "Y_{k-1}"

○ D1 = "Y_k"

Vector

● $u = \begin{pmatrix} 0.8 \\ 0.72 \end{pmatrix}$

● $v = \begin{pmatrix} 1.96 \\ 4 \end{pmatrix}$



	A	B	C	D	E
1	Matrix A		Y_{k-1}	Y_k	
2	2	0.5	0.8	1.96	2.45
3	5	0	0.72	4	5.56
4					
5					
6					
7					
8					
9					
10					
11					
12					
13					
14					
15					
16					
17					
18					
19					